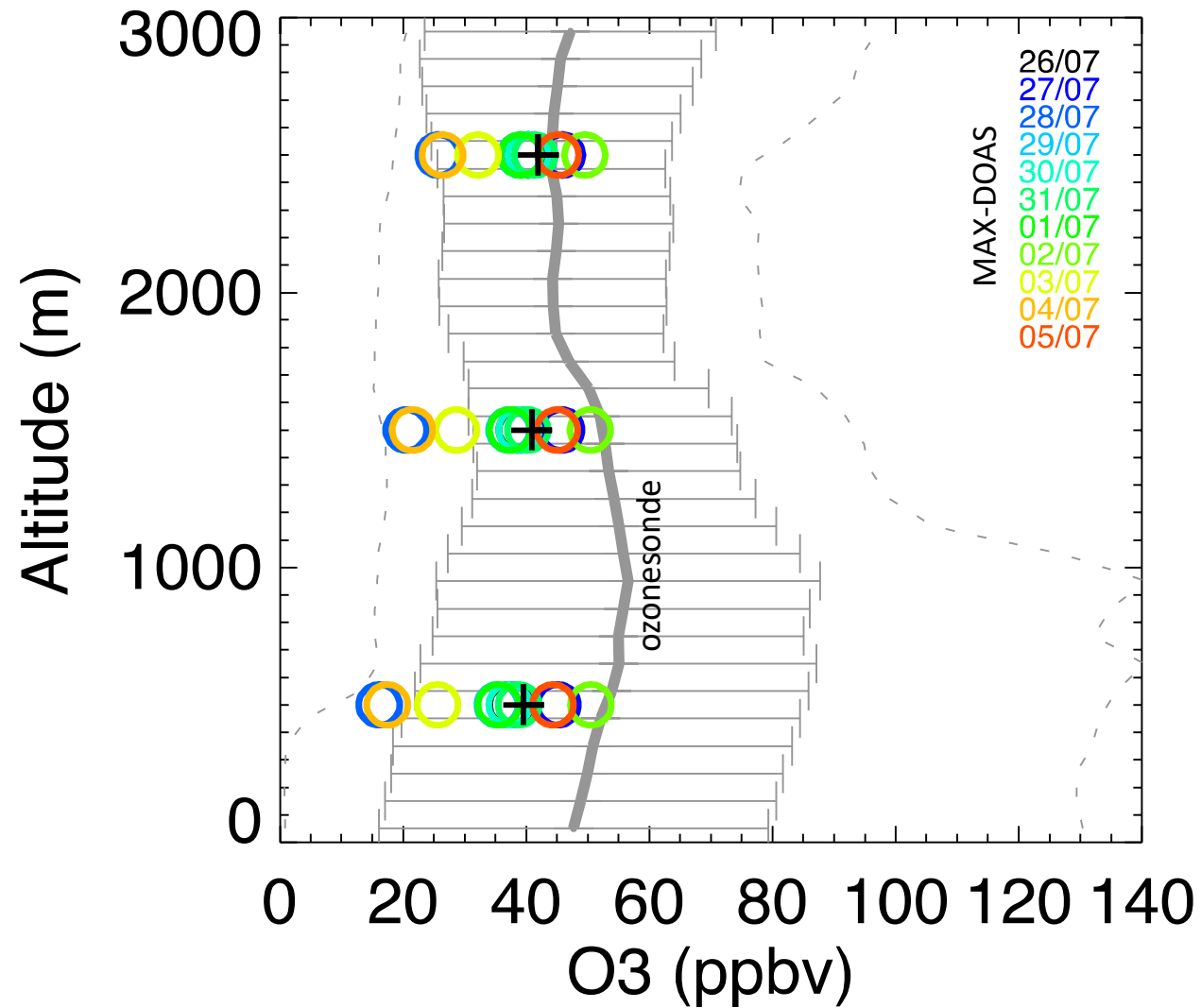


MAX-DOAS daily O₃ observations at 12-3 pm during the Chiba Campaign 2021 compared with an ozonesonde-based O₃ climatology for the same period but in 2010-2020. The launch of ozonesondes (at Tateno, 50 km from Chiba) is usually at 2-3 pm.



MAX-DOAS O₃ partial column (<1 km, circles) observations simulated with a box model (van Stratum et al., 2012). Simulations (lines) used the ABLH, [NO₂] and [HCHO] observed at 10 am as initial conditions. In these days, clean maritime air masses bring very low O₃.

